



Orchestrating a brighter world **NEC**

Professional Installation Projectors

PX1005QL

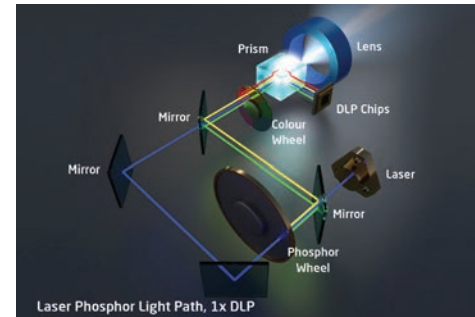
4KUHD



Powerful installation projectors with laser-phosphor light source supports new, demanding projection applications.

Laser Light Module

- 20,000-plus hours of virtually maintenance-free operation
- High-brightness, lower power consumption enhances applications such as retail, digital signage and theme parks
- Ability to control brightness creating a stable image over longer time periods
- Images appear immediately after power on due to instantaneous start up of the laser



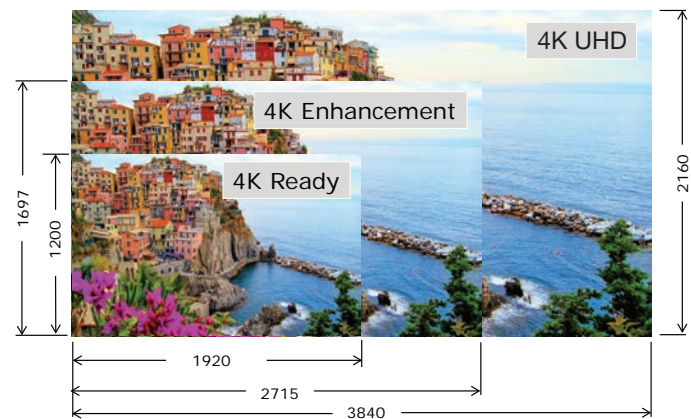
Flexible

- Enjoy greater installation flexibility with a complete line of optional bayonet style lenses (8) for quick and easy exchange (including the NP39ML-4K UST lens). Lens throw distances range from 1.6 to 182.9 ft
- Tilt-free installation capabilities make these projector ideal for almost any install environment, including portrait orientation
- +50%/-30% vertical lens shift and +20%/-10% horizontal lens shift capabilities make alignment easy



Integrated and Powerful

- Project uncompressed FHD video with integrated HDBaseT
- High performance video processing/scaling creates life-like images
- Integrated software applications such as DisplayNote®, Crestron Roomview, AMX Beacon and PJ Link allow for complete interactivity and control

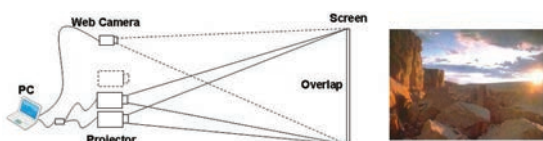


4K UHD Resolution

- Utilizing the latest DMD chip from Texas Instruments with pixel shift capabilities resulting in an unsurpassed viewable resolution of 8.3million pixels
- Viewable resolution matches standard 4K UHD LCD displays providing consistency when developing content for your presentations (native WQXGA 2716 x 1528 + 4K Smoothing)
- Allows four distinct 1080p resolution images to be displayed at one time creating a seamless video wall

Stacking correction

The industry's first built-in stacking correction capabilities (up to four projectors) allows the projectors to boost an image's brightness up to 40,000 lumens, which is ideal for larger-sized screens and environments with heavy ambient light. This feature also prevents the complete loss of an image, which can happen when using only one projector.



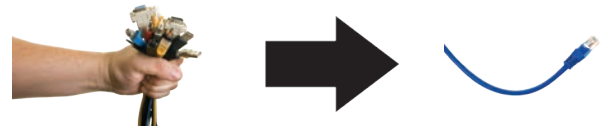
Edge blending

This function seamlessly blends multiple projected images to display a single high-resolution image.



Built-In HDBaseT Support

Simplify your installations with HDBaseT. Optimized for video applications and supporting uncompressed full HD digital video, audio, ethernet, power and various control signals. With only a single cable (up to 100m) to run, infrastructure and labor costs are reduced, installations are significantly easier, and there is no cable clutter to manage. With uncompressed HD video support, images have never been more stunning. What's more, control signals are contained in the same cable.

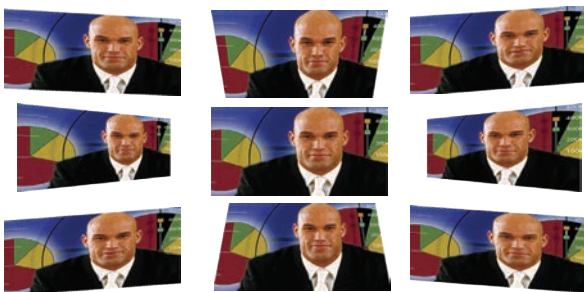


Sealed Optical Engine

- Longer lasting more consistent image and light output
- Maintenance becomes a thing of the past allowing
- Eliminates external contaminants from depositing on the optical engine preventing a degradation in image brightness

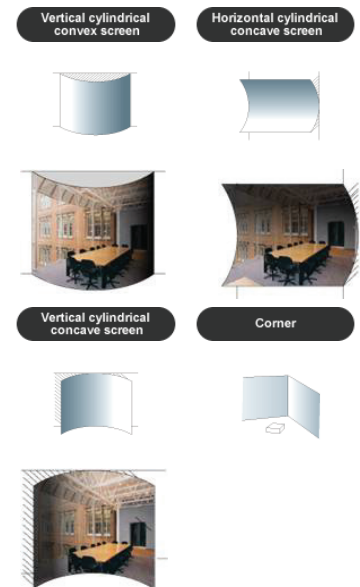
Cornerstone

Enhanced keystone correction allows for horizontal, vertical and diagonal image correction for aligned images even when the projector is set up at an angle to the screen.



Geometric Correction

Projecting an image isn't confined to a standard flat screen or wall with the NEC PX Series. Geometric correction allows these models to project an image on spheres, cylinders, corner angles and many more non-standard surfaces.



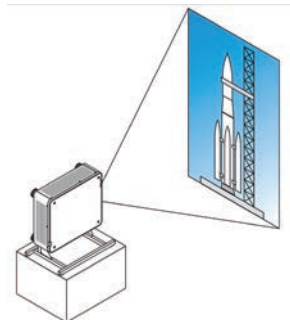
Tilt-free

The projector can be rotated freely (360°) to orient the image depending on the installation requirements



Portrait mode

Allows the projector to be rotated (and screen if necessary) to a vertical alignment so that portrait content can be viewed without black bars on the side when landscape mode is used.



UNIQUE FEATURES

3D Reform™ allows you to square the image by adjusting horizontally, vertically or diagonally when the projector cannot be placed parallel or perpendicular to the screen

Advanced AccuBlend™ ensures detailed images when non-native resolution sources are connected to the projector

AutoSense™ automatically syncs with any computer signal and features one-touch image optimization

64-step image magnification with location control

Discreet source keys for source selection

Remote diagnostics enable the user to monitor and make adjustments to the projector remotely

Built-in HTTP page for control and monitoring over a LAN network. Email notification of error messages or lamp end-of-life can be sent to remote locations.

WARRANTY

Registered owners receive a five (5) years or 20,000 hours (whichever comes first) parts and labor warranty including InstaCare next business day exchange.

IN THE BOX

Remote control, batteries, power cord, user's manual on CD-ROM, quick start guide, product registration card.

ACCESSORIES

NC1100CM	Ceiling mount
RMT-PJ35	Replacement remote control
NP01PW1	Power cable
RGBCBL-PJPX	RGB cable
Optional Lenses	NP16FL-4K, NP17ZL-4K, NP18ZL-4K, NP19ZL-4K, NP20ZL-4K, NP21ZL-4K, NP31ZL-4K, NP39ML-4K
SB-01HC	HD/SS-SDI input card
SB-04HC	3G/HD/SD-SDI input Card

N8000-8830	NEC OPS PC with Intel Core i5, 320GB Hard Drive, Windows Embedded Standard 7
N8000-8822	NEC OPS PC with Intel Celeron, 320GB Hard Drive, Windows Embedded Standard 7
ADVEXON1-I	Extends term of InstaCare service program to 2 years
ADVEXON2-I	Extends term of InstaCare service program to 3 years

ORDERING MODEL NUMBERS

NP-PX1005QL-B
NP-PX1005QL-W



		PX1005QL		
Display Technology		0.66" TRP DMD		
Light Output (lumens)		10,000 normal / Eco = variable		
Resolution	Viewable	UHD 3840 x 2160		
	Maximum	4K 4096 x 2160		
Contrast Ratio (up to)		10,000:1 with dynamic contrast		
Lamp Life (up to)		20,000 hours		
Screen Size (diagonal)		40 to 500 in. / 1.57 to 19.7m		
Throw Ratio	NP39ML-4K	0.38:1		
	NP31ZL-4K	0.74 - 0.93:1		
	NP16FL-4K	0.76:1		
	NP17ZL-4K	1.24 - 1.78:1		
	NP18ZL-4K	1.71 - 2.25:1		
	NP19ZL-4K	2.20 - 3.67:1		
	NP20ZL-4K	3.54 - 5.36:1		
	NP21ZL-4K	5.25 - 8.28:1		
Projection Distance		1.6 to 182.9 ft. / 0.6 to 55.8m		
Projection Angle		1.2 to 17.6° tele / 1.8 to 22.0° wide		
Lens	Zoom	Motorized		
		Zoom Ratio	NP39ML-4K	-
			NP31ZL-4K	1.25:1
			NP16FL-4K	-
			NP17ZL-4K	1.41:1
			NP18ZL-4K	1.3:1
			NP19ZL-4K	1.65:1
			NP20ZL-4K	1.5:1
	NP21ZL-4K		1.55:1	
	Focus	Motorized		
		NP39ML-4K	F=2.0, f=5.64mm, 6.0 lbs. (2.7 kg)	
		NP31ZL-4K	F=1.96 to 2.3, f=11.3 to 14.1mm, 2.9 lbs. (1.3 kg)	
		NP16FL-4K	F=1.85, f=11.6mm, 2.0 lbs. (0.9 kg)	
		NP17ZL-4K	F=1.85 to 2.5, f=18.7 to 26.5mm, 2.4 lbs. (1.1 kg)	
NP18ZL-4K		F=1.70 to 1.90, f=26.0 to 34.0mm, 1.8 lbs. (0.8 kg)		
Shift	Powered +50%/-30% vertical, +20%/-10% horizontal			
	NP19ZL-4K	F=1.86 to 2.48, f=32.9 to 54.2mm, 2.2 lbs. (1.0 kg)		
	NP20ZL-4K	F=1.85 to 2.41, f=52.8 to 79.1mm, 2.2 lbs. (1.0 kg)		
	NP21ZL-4K	F=1.85 to 2.48, f=78.5 to 121.9mm, 3.0 lbs. (1.35 kg)		
Keystone Correction		+/- 40° horizontal, +/- 40° vertical		
Synchronization Range	Horizontal	Analog: 15-100kHz, Digital: 15-153kHz		
	Vertical	Analog: 48-120Hz, Digital: 24-120Hz		
Supported Video Standards		NTSC, NTSC4.43, PAL, PAL-60, PAL-M, PAL-N, SECAM		
SD/HD Video Signal Compatibility		1080p, 1080i, 720p, 576p, 576i, 480p, 480i		
PC Signal Compatibility		VGA, SVGA, XGA, SXGA, SXGA+, UXGA, WUXGA		
Macintosh Compatibility		Yes		
Input/Output Terminals				
Input Terminals	RGB1 (digital)	HDMI (V2.0) w/HDCP (V1.4/2.2) - 4096 x 2160 @ 60p, 12 bit 4:4:4		
	RGB2 (digital)	HDMI (V2.0) w/HDCP (V1.4/2.2) - 4096 x 2160 @ 60p, 12 bit 4:4:4		
	RGB3 (digital)	DisplayPort w/HDCP (V1.4) - 4096 x 2160 @ 60p, 12 bit 4:4:4		
	RGB4 (digital)	DisplayPort w/HDCP (V1.4) - 4096 x 2160 @ 60p, 12 bit 4:4:4		
	RGB5 (digital)	HDBaseT w/HDCP (V1.4/2.2) - 4096 x 2160 @ 60p, 8 bit 4:2:0		
	RGB6 (digital)	Quad 3G-SDI		
	Option Slot	OPS		
External Control		RS-232, IR, HDBaseT, DDC/CI, RJ-45, USB (USB 2.0), Stereo Mini		
Sync Compatibility		Separate Sync / Composite Sync / Sync on G		
Power Requirements		100 - 240V AC, 50/60Hz		
Input Current		12.5A - 5.5A		
Power Consumption				
(ECO off/ECO Mode/Standby/Power Saving)		1181W / 1002W / 658W / 0.88W / 0.5		
Installation Orientation		Floor/Front, Floor/Rear, Ceiling/Front, Ceiling/Rear		
Gross Dimensions (WxHxD)		30.9 x 17.5 x 27.5in. / 784 x 445 x 699mm		
Gross Weight		87.3 lbs. / 39.6 kg		
Product Dimensions (WxHxD)		19.7x 8.5 x 22.9in. / 500 x 216 x 583mm		
Net Weight		68.8 lbs. / 31.2 kg		
Fan Noise		42 dB Normal / 39 dB Eco1 / 37 dB Eco2		
Regulations		USA: UL(UL60950-1, Laser + Lamp (IEC60825-1 + IEC62471), FCC Part15 Class A Canada: CUL(UL60950-1, Laser + Lamp (IEC60825-1 + IEC62471), ICES-003 Class A		
Operating Temperature		-14° - 122°F / -10° - 50°C		
Humidity		20-80% non-condensing		
Storage		-14° - 122°F / -10° - 50°C		

* Lens does not ship with the projector.
Additional accessories are available, including screens, carts, mount accessories and replacement cables.
Visit www.necdisplay.com for details.

3D Reform, Advanced AccuBlend, AutoSense and ECO Mode are trademarks of NEC Display Solutions. HDMI, the HDMI Logo and High-Definition Multimedia Interface are trademarks or registered trademarks of HDMI Licensing LLC. All other brand or product names are trademarks or registered trademarks of their respective holders. Product specifications subject to change.

©2020 NEC Display Solutions of America, Inc. and the NEC logo are registered trademarks of NEC.

Cat.No. 25.NEC.80.GL.UN . 320 | Rev. 04.24.2020

